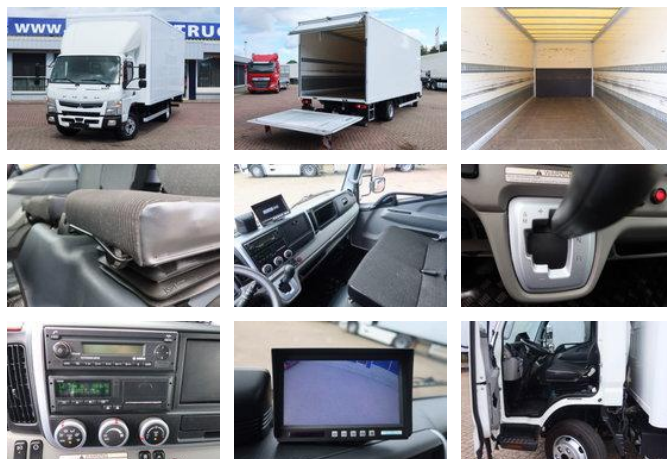




FUSO Canter Mitsubishi Canter 7C18

General characteristics

Brand	FUSO
Model	Canter
Subcategory	Box
License plate	BB-645-R
Meter reading	176.000km
Year of construction	2020
Colour	Wit
Condition	Used
Fuel	Diesel
Emission class	Euro 6
Reference	BB-645-R



Properties

Single weight	4.358kg
Load capacity	3.132kg
GVW	7.490kg

FUSO Canter Mistubishi Canter 7C18

Technical specifications

Number of axes	2
Axis configuration	4x2
Transmission	Automatic
Assets	180hp

Accessories

- Tinted glass
- Airbag
- Front center armrest
- Suspension seat
- Radio
- Tachograph
- Beifahrerbank
- Outside temperature display
- Cruise control
- Anti-lock braking system
- Reversing camera
- Air conditioning
- Roof spoiler
- Electrically operated windows
- Toolbox
- Central doorlocking